



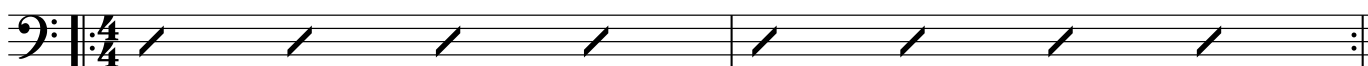
ESSENTIAL GROOVE TECHNIQUES

PEDAL TONES

EX.1 CHORD PROGRESSION

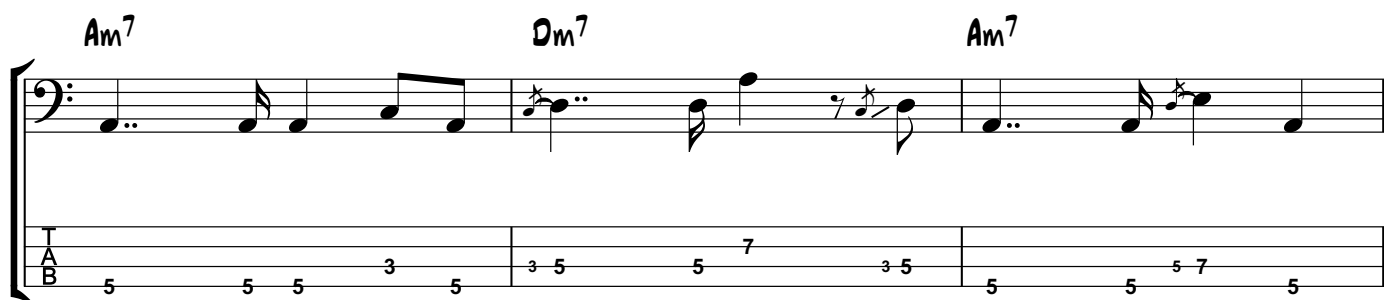
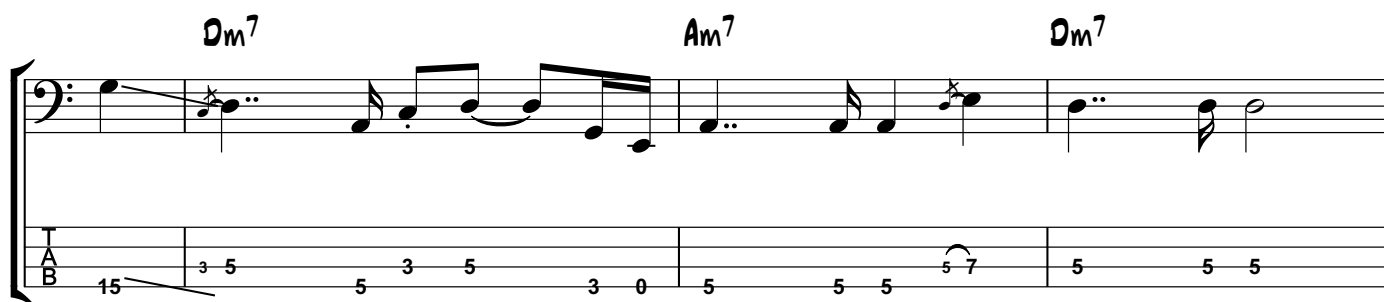
Dm⁷

Am⁷



Starting point:
03:35

SCOTT'S EXAMPLE. EXPERIMENT ADDING IN THE G7 PEDAL OVER THE BACKING TRACK.



ETC

Practice using the G pedal with the backing track and feel the tension and release when you return to D minor.